

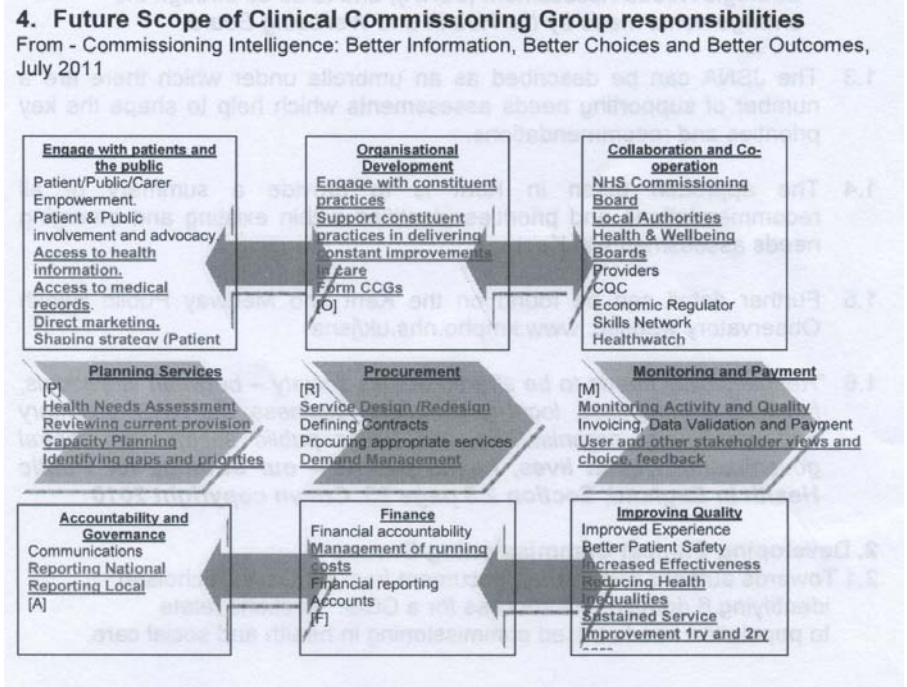


**Kent LINK External Representatives  
Meeting Report**

<b>Name of LINK Representative</b>	Roger Kendall
<b>Name of External Organisation</b>	Kent County Council
<b>Name of External Group</b>	Shadow Health and Wellbeing Board (HWBB)
<b>Name of lead contact of External Group</b>	Roger Gough, Cabinet member for Business Strategy and Support Lead on Health Reform
<b>Date of Meeting</b>	28 September 2011
<b>Venue of Meeting</b>	Council Chamber, Sessions House, Maidstone
<b>Summary of Meeting (If appropriate attach papers)</b>	<p>The purpose of the meeting was to formally establish the Health and Wellbeing Board, as envisaged in the Health and Social Care Bill currently going through Parliament.</p> <p>After the delegates were welcomed by M Gough and declarations of interest were noted, Mr Gough was duly selected as Chair of the Group which the Department of Health has suggested should operate as if they were statutory joint advisory committees under the 1972 Local Government Act. Terms of Reference and a Code of Conduct were adopted.</p> <p>One of the main duties of the committee is to examine and update as necessary the Joint Strategic Needs Assessment (JSNA) for Kent and various strands of this were examined in a presentation by Declan O'Neill, Director of Health Improvement at West Kent PCT.</p> <p>This included the following outline of responsibilities for proposed Clinical Commissioning Groups (CCGs).</p>

**Recommendations / Actions eg**

- Items for LINK bulletin
- Items for individual interest group
- Issue to Priorities Panel / Governors' Group



The commissioning decisions of CCGs will need to address the health needs of their population as evidenced in the JSNAs.

Following this the committee considered a number of points during which various participants addressed points raised by the agenda item

What can the H&WBB do?

- How do we lead on population health and health economy?
- What decision do we need to make on ensuring Health Improvement?
- How do we assist the joining up Health, Social Care and Public Health?
- How do we do things differently and enable others to do the same?
- How do we ensure we address the health and wellbeing of children?
- Developing the work programme
- What strategic direction do we want to give?

Following this discussion, Dr James Thallon Medical Director of

	<p>NHS Kent and Medway, discussed the means whereby the NHS Commission would agree to the authorisation process for CCGs of which there were potentially 8 or 9 in Kent.</p> <p>It is likely that there will be no direction as to the size of a CCG either in terms of area or population. However CCGs would be required to meet strict criteria as to their ability to commission without problems arising.</p> <p>The next item related to the Dover District HWBB and it was agreed that this would be a sub-committee of the Kent HWBB which was agreeable both to County and to District.</p> <p>The HWBB will need to examine the arrangements for authorisation of CCGs and the NHS Commission will need to consider these views. These criteria will need to take into account the arrangements for patient and public engagement by the consortiums amongst other criteria and I expressed the view that much needed to be done to make sure these were robust, open and transparent.</p> <p>The meeting received information on a consultation on developing a Communications Strategy for the HWBB which will be further considered at the next meeting.</p>
<b>Date of Next Meeting</b>	23 November 2011

**For office use only**

---

**Recommendations / Actions**

<i><b>For Office Use Only</b></i>	<i><b>Recommendation / Action</b></i>	<i><b>Date of Action Taken</b></i>	<i><b>Who By</b></i>
<i><b>Name</b></i>			
<i><b>Date</b></i>			