

SDS

Self Directed Support : Active Lives *for* Adults



Personalisation and Self Directed Support in Kent

James Lampert
Personalisation Project Manager

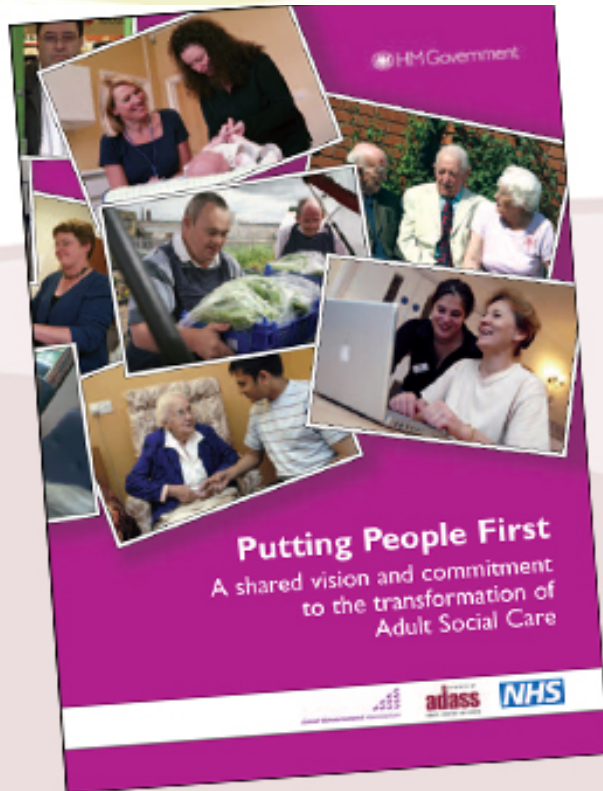
6 April 2009



Today.....

- **What does the future look like?**
 - An introduction to Personalisation and Self Directed Support
- **SDS in Kent – the story so far.....**
- **Questions**

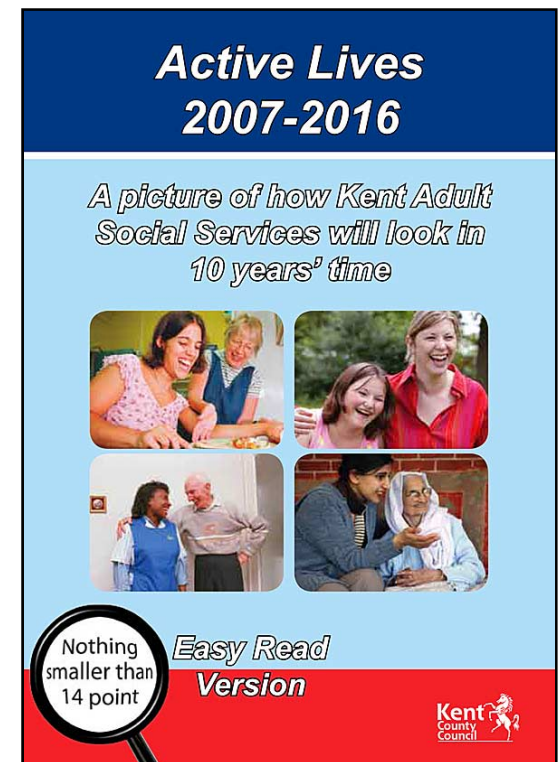
Policy context



- Putting People First (December 2007):
 - Universal Services (housing, leisure, transport, Information)
 - Early intervention and prevention
 - Choice and Control - Self Directed Support
 - Social Capital – inclusive communities
- Transforming Adult Social Care – LAC (DH) Circulars Jan 2008 and March 2009

Why is KASS changing?

- So that people can:
- Make their own choices
- Have control over their own support
- Live life as they want



What's it all about?

Personalisation

The process by which state provided services can be adapted to suit **you**

Self directed support

Support that is determined and controlled by **you**, based on an assessment of need by the state. (Includes receiving cash, spending on services that meet your needs, to choosing which hospital you wish to attend)

Individual budgets

Like an IB but solely made up of social care funding

Personal budgets

Direct payments

An indicative amount of money that can combine several funding sources that **you** can use to purchase services, from the public, private or voluntary sector. The "Right to Control" consultation starts 2009.

A cash payment paid directly to **you** so you can acquire your own services, rather than having them delivered by the council

Contact and Assessment Service

- Arrange:

- equipment & minor adaptations (already)
- enablement services (pilot from April)
- short term services



Enablement Services



- Active promotion
- Some to be provided through private and voluntary sectors – July 2009
- Free service for up to 6 weeks

Assessment and Enablement Teams

- Supported self assessment
- indicative Personal Budget allocation
- Equipment / adaptations
- Enablement services



Personal Budgets



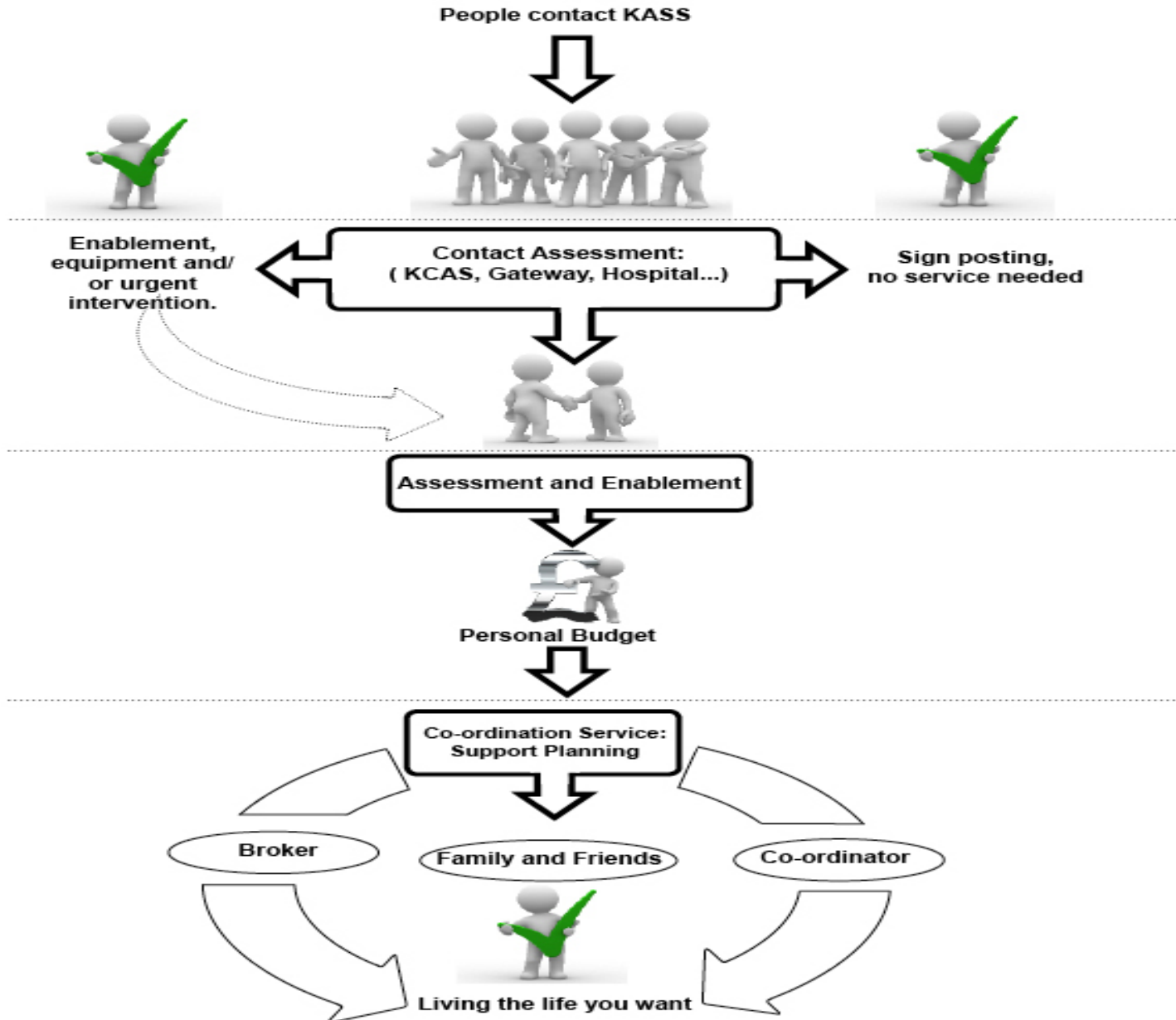
- Personal Budgets for all new people - from April 2009
- All to have Personal Budgets by summer 2010

Co-ordination Service



- Brokerage
- Developing support plans
- Case management
- Outcome focused reviews

Self Directed Support



Key Milestones - 2009

April

- Personal budgets – from 1st April
- Direct access to enablement services

July

- External enablement services

October

- New KASS structure in place – separates assessment and support planning

SDS

Self Directed Support : Active Lives *for* Adults

Contact

Self Directed Support Project Team

Tel: 01622 221844

Email: alfa@kent.gov.uk

Web: www.kent.gov.uk/sds



SDS

Self Directed Support : Active Lives *for* Adults

